



# Annual Business Sponsorship Opportunities

## WHO WE ARE

The Greater Lovell Land Trust (GLLT) is a non-profit 501(c)3 corporation that was founded in 1985. Our service area encompasses over 7,500 acres of fee-owned lands and conservation easements in the towns of Lovell, Stoneham, Stow, Sweden, and parts of Waterford, Albany Township, and Fryeburg, Maine.

GLLT lands are part of a largely forested region bordered by National Forest and protected by GLLT and neighboring land trusts. We work together to protect watersheds, that start from the mountains and end in the ocean supplying water to Portland and protecting local wells. This forested region supports numerous wildlife corridors, contains ponds and streams inhabited by native fish and waterfowl, and provides a habitat for native plants. Our mission is to protect these lands today and for the future.

We are supported by the generosity of landowners who work with us on conservation easements and acquisitions, and by our members, donors, and grantors. Critically, we rely on a large group of volunteers, including more than two dozen docents and others who lead trail walks and conduct educational programs, the Groundhogs crew who maintain our trails, our easement monitoring volunteers, and the many people from near and far who share our trails and support our programs.

## WHY WE NEED YOU

GLLT's properties are open to the public and offer a variety of trails and quiet spots. Our programs, whether for school and recreation departments or for the public, are free to all who participate. But there are costs to maintain and construct trails, to deliver education programs to schools, to engage experts to share their knowledge with our community in various programs, and to stage community events. We need your support.

We seek business partners who share our passion for preserving and protecting our shared habitat. For these special partners, GLLT offers the opportunity to promote your business by making your support visible to our members. Here's how you can join our supporters...

# Annual Business Partnerships

<b>Fir</b> \$250	<ul style="list-style-type: none"><li>• Logo on Annual Report</li><li>• Logo on GLLT website</li><li>• Logo on Spring &amp; Fall Newsletters</li><li>• GLLT decal</li></ul>
<b>Hemlock</b> \$500	<ul style="list-style-type: none"><li>• Logo on Annual Report</li><li>• Logo on GLLT website</li><li>• Logo on Spring &amp; Fall Newsletters</li><li>• Social media recognition (Facebook &amp; Instagram)</li><li>• GLLT decal</li></ul>
<b>Spruce</b> \$750	<ul style="list-style-type: none"><li>• Logo on Annual Report</li><li>• Logo on GLLT website</li><li>• Logo on Spring &amp; Fall Newsletters</li><li>• Social media recognition (Facebook &amp; Instagram)</li><li>• Logo featured on weekly e-blast</li><li>• Booth at a GLLT event of your choosing</li><li>• GLLT decal</li></ul>
<b>Pine</b> \$1000	<ul style="list-style-type: none"><li>• Logo on Annual Report</li><li>• Logo on GLLT website</li><li>• Logo on Spring and Fall Newsletters</li><li>• Social media recognition (Facebook &amp; Instagram)</li><li>• Logo featured on weekly e-blast</li><li>• Booth at a GLLT event of your choosing</li><li>• Private, customizable guided nature walk for your company</li><li>• GLLT decal</li></ul>

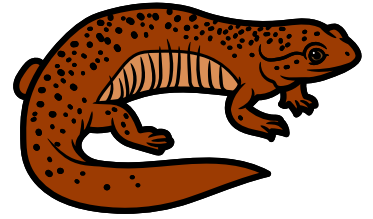


# Other Annual Opportunities

---

## SALAMANDER SASHAY

A 5K run/walk in partnership with Lovell Recreation.



<b>T-Shirt Sponsorship</b>	<b>\$500</b>	<ul style="list-style-type: none"><li>• Name/logo on t-shirts</li><li>• Logo on Annual Report</li><li>• Logo on GLLT website</li><li>• Logo on Spring &amp; Fall Newsletters</li><li>• Social media recognition (Facebook &amp; Instagram)</li></ul>
<b>Raffle Item Donation</b>	<b>Item priced \$25+</b>	<ul style="list-style-type: none"><li>• Social media recognition (Facebook &amp; Instagram)</li><li>• Business name on Annual Report</li></ul>
<b>Food/Drink</b>	<b>\$200</b>	<ul style="list-style-type: none"><li>• Social media recognition (Facebook &amp; Instagram)</li><li>• Business name on Annual Report</li><li>• Logo on Spring &amp; Fall Newsletters</li></ul>

---

## GENERAL EVENT SPONSORSHIP

Yearly events include: Easter Egg Hunt, Jack-o-Lantern Walk, Pollinator Festival. Sponsorship will pay for associated materials.

<b>General Event Sponsor</b>	<b>\$150+</b>	<ul style="list-style-type: none"><li>• Social media recognition (Facebook &amp; Instagram)</li><li>• Business name on Annual Report</li><li>• Logo on Spring &amp; Fall Newsletters</li></ul>
------------------------------	---------------	--

# Other Annual Opportunities

## COMMUNITY PROGRAMS- GUEST SPEAKERS

Throughout the year, GLLT hosts in-person and virtual guest speakers for community talks at the Charlotte Hobbs Memorial Library.

<b>Guest Speaker for Community Talks</b>	<b>\$150</b>	<ul style="list-style-type: none"><li>• Social media recognition (Facebook &amp; Instagram)</li><li>• Business name on Annual Report</li><li>• Logo on Spring &amp; Fall Newsletters</li><li>• Logo on any flyers created for event</li></ul>
--	--------------	---

## STORYBOOK TRAIL

In collaboration with the Charlotte Hobbs Memorial Library, GLLT installs children's storybooks along the trail at Kezar River Reserve. Storybooks are changed seasonally.

<b>Sponsor (4) storybooks per year</b>	<b>\$150</b>	<ul style="list-style-type: none"><li>• Business name on Annual Report</li><li>• Logo on Spring &amp; Fall Newsletters</li><li>• Logo featured on Storybook flyer and Storybook Trail page on website.</li><li>• Logo featured along Storybook Trail.</li></ul>
--	--------------	---

## Dates for 2024 Events

- **Easter Egg Hunt**- March 30, 2024
- **Salamander Sashay**- May 4, 2024
- **Pollinator Festival**- July 6, 2024
- **Jack-o-Lantern Walk**- October 26, 2024

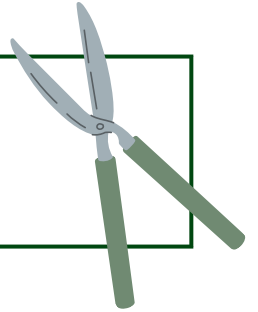
# Other Annual Opportunities

---

## STEWARDSHIP

GLLT maintains over 15 miles of trails. Trails are maintained in part by a generous team of volunteers.

<b>Tools and Equipment</b>	<b>\$150+</b>	<ul style="list-style-type: none"><li>• Social media recognition (Facebook)</li><li>• Business name on Annual Report</li><li>• Logo on Spring &amp; Fall Newsletters</li></ul>
----------------------------	---------------	--



---

## MESA (MAINE ENVIRONMENTAL SCIENCE ACADEMY)

Each week, GLLT educates over 35 sixth- eighth graders with the Molly Ockett Middle School Maine Environmental Science Academy.

<b>General MESA Sponsorship</b>	<b>\$150+</b>	<ul style="list-style-type: none"><li>• Social media recognition (Facebook)</li><li>• Business name on Annual Report</li><li>• Logo on Spring &amp; Fall Newsletters</li></ul>
---------------------------------	---------------	--

**In-kind donations accepted too!**

# OUR REACH

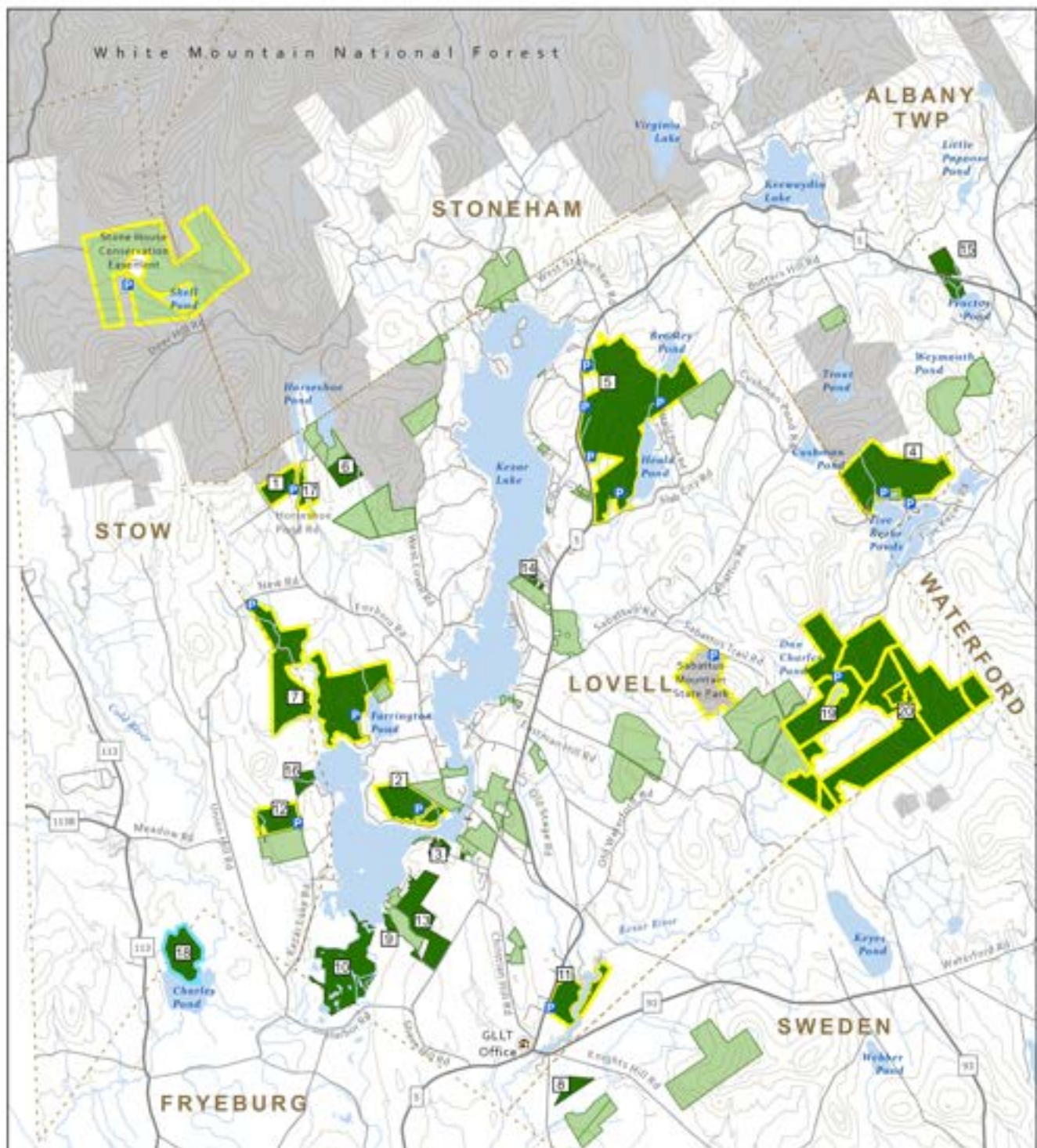


Over 1,200 Facebook followers and 900 Instagram followers

Email newsletter reaches over 800 people each week



Over 2,500 people attended GLLT programs and events in 2023

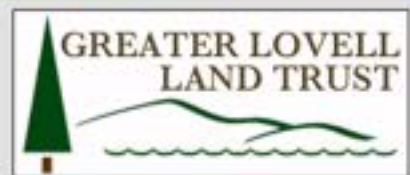


## Greater Lovell Land Trust Conservation Lands

### GLLT Properties

- |  |   |
|--|---|
| 1 Bishop Cardinal Reserve              | 14 Kezar Corridor Lands-James Family Forest Plus  |
| 2 Chip Stockford Reserve               | 20 Kezar Corridor Lands-Patterson Hill Properties |
| 3 Conifer Reserve                      |   |
| 4 Five Kezar Ponds Reserve             |   |
| 5 Heald and Bradley Ponds Reserve      |   |
| 6 Horseshoe Pond Reserve               |   |
| 7 John A. Segur Wildlife Refuge        |   |
| 8 John R. Bridges Reserve              |   |
| 9 June Wing Preserve                   |   |
| 10 Kezar Outlet Fen                    |   |
| 11 Kezar River Reserve                 |   |
| 12 Long Meadow Brook Reserve           |   |
| 13 Lower Bay Reserve                   |   |
| 14 Mudjekeeas Reserve                  |   |
| 15 Proctor Pond Reserve                |   |
| 16 Sabra Creeper Hill Reserve          |   |
| 17 Wilson Wing Moose Pond Bog Preserve |   |
| 18 Charles Pond Reserve                |   |

- GLLT Property (23 properties, 3885 acres)
- GLLT Easement (43 easements, 3264 acres)
- Property with Public Trails (11 properties, ~20 miles)
- Property with Public Access from water only
- P Trailhead Parking
- Other Conserved Land
- Town Boundary
- Contour (100 ft interval)
- Lake, Pond
- State Highways
- River, Stream
- Local Roads



Data Sources: Maine Office of GIS, GLLT staff and volunteers  
 Map Production: Aidan Black  
 Revision: Erika Rowland  
 Date: April 2023

**Follow Us**   
 @greaterlovelllandtrust

For trail maps and more visit  
[www.gllt.org](http://www.gllt.org)





# SPONSORSHIP FORM

**Yes! We would like to become an official sponsor of GLLT!**

- Fir - \$250
- Hemlock- \$500
- Spruce- \$750
- Pine- \$1000
- Other \_\_\_\_\_

**Greater Lovell Land Trust**

PO Box 225  
Lovell, Maine 04051

**Business Name:**

**Address:**

**Phone Number:**

**Contact Name:**

**Email:**

**Or scan the QR code!**



**My company will be paying via:**  Credit Card  Check

Check can be made payable to the Greater Lovell Land Trust

**Type of card:** \_\_\_\_\_

**Name on card:** \_\_\_\_\_

**Card number:** \_\_\_\_\_

**Expiration date:** \_\_\_\_\_

**Security code:** \_\_\_\_\_

**Billing Address:** \_\_\_\_\_

# Greater Lovell Land Trust

PO Box 225, Lovell, Maine 04051

207-925-1056



Conservation Excellence

Follow us on:



Visit our website at [gllt.org](http://gllt.org)

